



WX5600-T0

Dual-Band Wireless AX6000 2.5G Extender

The Zyxel WX5600-T0 Dual-Band Wireless AX6000 2.5G Extender enables carrier-grade performance. As a key component of the Zyxel MPro Mesh® Solutions, the WX5600-T0 delivers smooth data streaming and seamless roaming for whole-home WiFi coverage.

Benefits

WiFi 6 technology for superior lag-free performance

Supporting the latest WiFi 6 (11ax) standard, the WX5600-T0 delivers speeds up to 4800 Mbps* with 5 GHz 4x4 802.11ax and 1200 Mbps* with 2.4 GHz 4x4 802.11ax. The uplink MU-MIMO, Orthogonal Frequency Division Multiple Access (OFDMA) and beamforming technologies empower WX5600-T0 to deliver premium speed for multi-streaming data access and optimal WiFi experiences without dead zones.

Premium MPro Mesh® for whole-home WiFi coverage

Featuring EasyMesh fully compliant Zyxel MPro Mesh® Solutions**, the WX5600-T0 enhances your subscribers' experience by providing self-adapting, easy-to-manage whole-home WiFi coverage while reducing your service OPEX.

Seamless whole-home fiber-grade service

With two 2.5GbE LAN ports, the WX5600-T0 works seamlessly with any 2.5GbE WiFi 6 gateways to extend the reach of a premium WiFi network anywhere in your customers' homes, satisfying their demands for bandwidth-intensive applications.

Datasheet [WX5600-T0](#)



WiFi 6 (11ax) 4x4+4x4 for superior performance and coverage



Zyxel MPro Mesh® Solutions (compliant with EasyMesh R3 standards)



2.5GbE LAN ports for optimized bandwidth utilization



Remote management via R-069 and TR-181



Zyxel-developed OPAL for superior flexibility and faster time to market

TR-069/TR-181 remote management for lower OPEX

Compliant with TR-069/TR-181 standards, the WX5600-T0 significantly simplifies deployment complexity and lowers operating and maintenance costs with its remote management capabilities.

Zyxel OPAL firmware achieves superior flexibility and shortens time to market

Compliant with the same OPAL firmware trunk applied to all Zyxel CPEs, the WX5600-T0 inherits a rich, field-proven feature set for guaranteed same user experience after migrating to new devices.

Specifications

System specifications

Wireless standards

- IEEE 802.11 a/n/ac/ax 5 GHz
- IEEE 802.11 b/g/n/ax 2.4 GHz

Wireless speed

- Transmit/receive
 - 4800 Mbps* for 5 GHz
 - 1200 Mbps* for 2.4 GHz

Wireless security

- WPA2-PSK/WPA3-SAE

Wireless features

- Auto channel selection
- MU-MIMO and beamforming
- Video-grade QoS
- WiFi Protected Setup (WPS)
- WiFi Multimedia (WMM)
- MAC address filtering
- Multiple SSIDs up to 4
- AP/band steering

System management

- HTTP/GUI
- TR-069/TR-181 remote management
- Remote firmware upgrade
- Dual images system recovery
- DHCP client and IGMP snooping
- MPro Mesh® management

Operation mode

- AP/repeater

MPro Mesh® management

- Pre-associated steering
- 5G/2.4G band steering
- Multi-AP roaming
- Band balancing
- Backhaul optimal

Hardware specifications

LAN

- Two 2.5GbE RJ-45 ports with auto MDI/MDIX support

Wireless

- 5 GHz: four internal antennas
- 2.4 GHz: four internal antennas

Buttons

- Power on/off
- Reset
- WPS

LED indicators

- Power/system status
- Backhaul link quality
- WiFi
- WPS

Power consumption

- 12 V DC 1.5 A
- 18 Watt max

Physical specifications

- Item dimensions (WxDxH):
128 x 40 x 128 mm
(5.03" x 1.57" x 5.03")
- Item weight: 307.8 g (0.67 lb.)
- Packing dimensions (WxDxH):
261 x 136.5 x 44 mm
(10.27" x 5.35" x 1.73")
- Packing weight: 619.8 g (1.37 lb.)

Environmental specifications

Operating environment

- Temperature:
0°C to 40°C (32°F to 104°F)
- Humidity:
10% to 90% (Non-condensing)

Storage environment

- Temperature:
-30°C to 70°C (-22°F to 158°F)
- Humidity:
10% to 95% (Non-condensing)

Certification

- CE
- Safety
- ErP

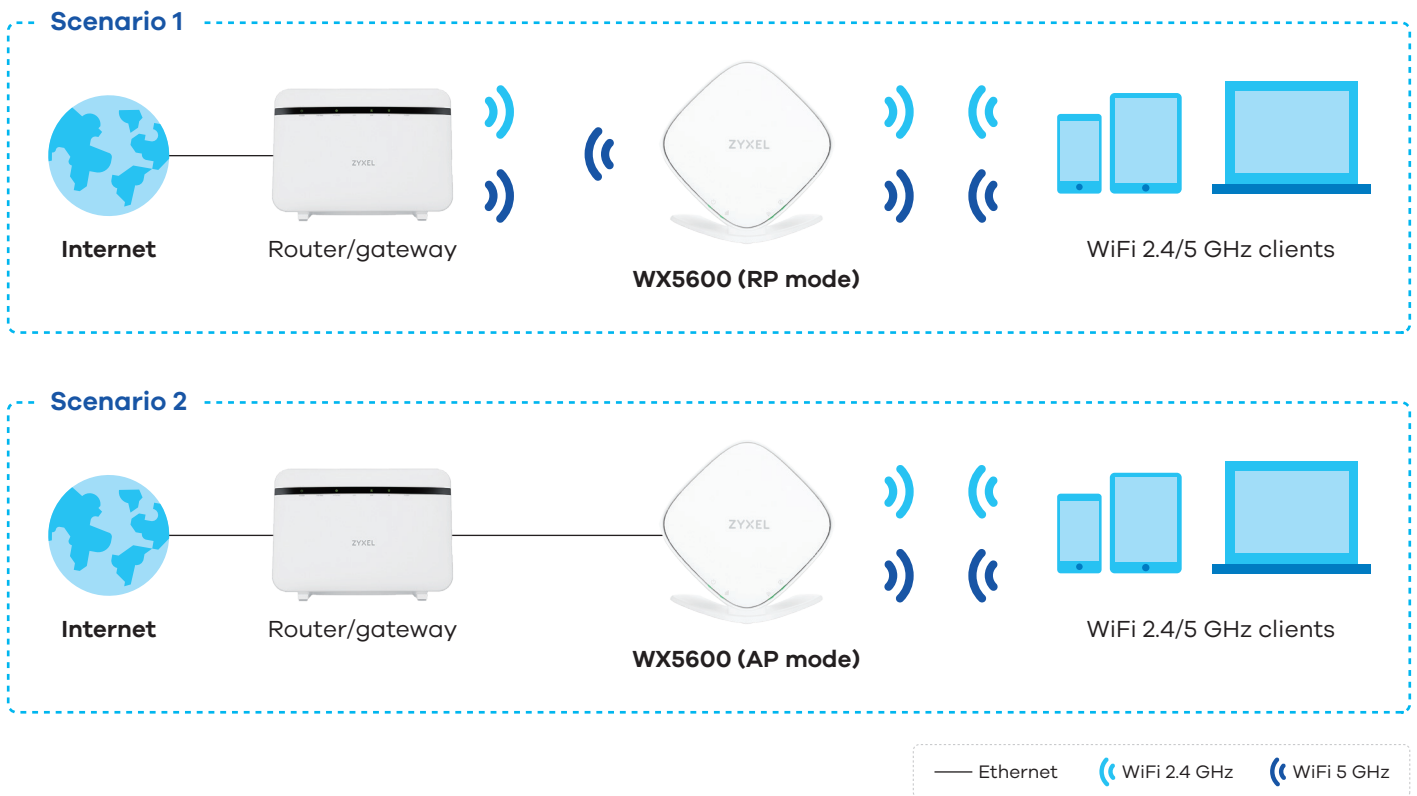
Package contents

- Wireless extender
- Power adapter
- Ethernet cable
- Quick Start Guide

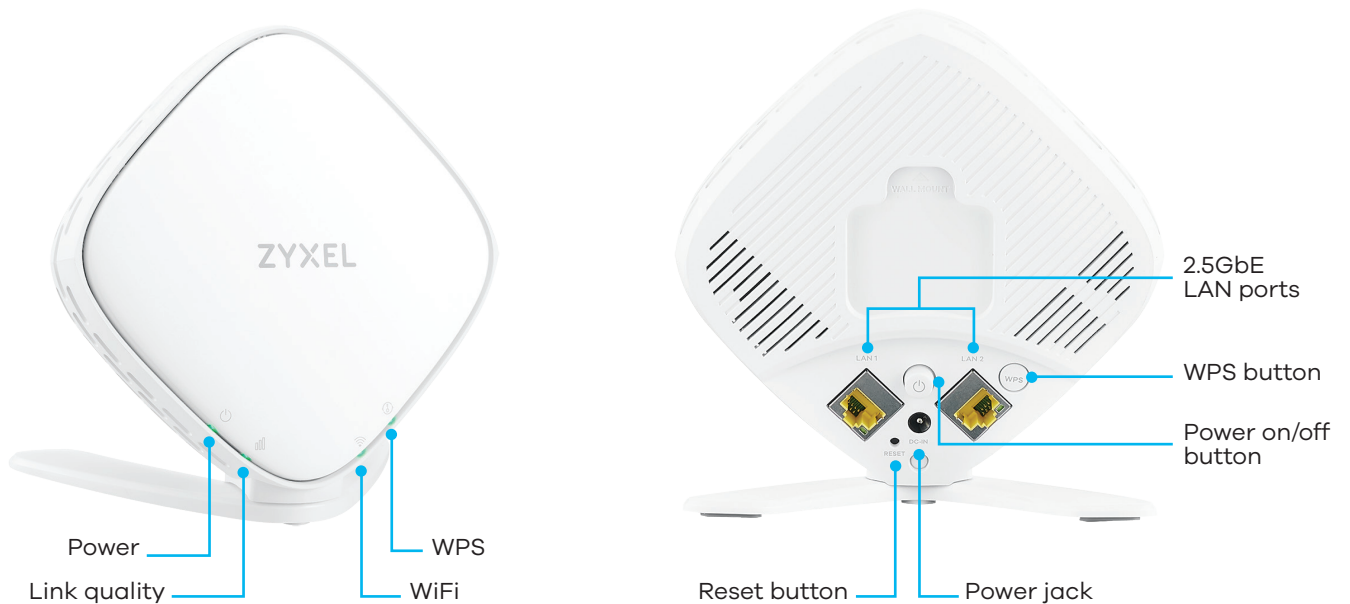
* The maximum wireless data is derived from IEEE standard 802.11 specifications. Actual data transfer rate will vary from network environment including: distance, network traffic, building site materials/construction, interference from other wireless devices, and other adverse conditions.

** Combining WX5600-T0 with the same Wireless Extender is advised for the ideal mesh network performance. Please contact us for detailed mesh function availability.

Application diagram



Hardware interface





For more product information, visit us on the web at <https://service-provider.zyxel.com>

Copyright © 2022 Zyxel and/or its affiliates. All rights reserved.
All specifications are subject to change without notice.



Datasheet [WX5600-T0](#)



16/09/22