

CloudEngine S5731-S Series Switches Datasheet

CloudEngine S5731-S series switches are next-generation standard gigabit switches that provide GE electrical/optical downlink ports and 10GE uplink ports.





Introduction






The CloudEngine S5731-S series switches were developed based on next-generation high-performing hardware and the Huawei Versatile Routing Platform (VRP). The CloudEngine S5731-S supports simplified operations and maintenance (O&M), intelligent stack (iStack), flexible Ethernet networking. It also provides enhanced Layer 3 features and mature IPv6 features. The CloudEngine S5731-S can be used in various scenarios. For example, it can be used as an access or aggregation switch on a campus network or as an access switch for Metropolitan Area Network.

Product Overview

Models and Appearances

The following models are available in the CloudEngine S5731-S series.

Models and Appearances	Description
 <p>CloudEngine S5731-S24T4X</p>	<ul style="list-style-type: none"> • 24 x 10/100/1000Base-T Ethernet ports, 4 x 10GE SFP+ ports • 1+1 power backup • Forwarding performance: 96 Mpps • Switching capacity: 128 Gbps/672 Gbps
 <p>CloudEngine S5731-S24P4X</p>	<ul style="list-style-type: none"> • 24 x 10/100/1000Base-T Ethernet ports, 4 x 10GE SFP+ ports • 1+1 power backup • PoE+ • Forwarding performance: 96 Mpps • Switching capacity: 128 Gbps/672 Gbps
 <p>CloudEngine S5731-S32ST4X</p>	<ul style="list-style-type: none"> • 24 x GE SFP ports, 8 x 10/100/1000Base-T Ethernet ports, 4 x 10GE SFP+ ports • 1+1 power backup • Forwarding performance: 108 Mpps • Switching capacity: 144 Gbps/672 Gbps
 <p>CloudEngine S5731-S32ST4X-A</p>	<ul style="list-style-type: none"> • 24 x GE SFP ports, 8 x 10/100/1000Base-T Ethernet ports, 4 x 10GE SFP+ ports • AC power supply


Models and Appearances	Description
	<ul style="list-style-type: none"> Forwarding performance: 108 Mpps Switching capacity: 144 Gbps/672 Gbps
 <p>CloudEngine S5731-S32ST4X-D</p>	<ul style="list-style-type: none"> 24 x GE SFP ports, 8 x 10/100/1000Base-T Ethernet ports, 4 x 10GE SFP+ ports DC power supply Forwarding performance: 108 Mpps Switching capacity: 144 Gbps/672 Gbps
 <p>CloudEngine S5731-S48T4X</p>	<ul style="list-style-type: none"> 48 x 10/100/1000Base-T Ethernet ports, 4 x 10GE SFP+ ports 1+1 power backup Forwarding performance: 125 Mpps Switching capacity: 176 Gbps/672 Gbps
 <p>CloudEngine S5731-S48P4X</p>	<ul style="list-style-type: none"> 48 x 10/100/1000Base-T Ethernet ports, 4 x 10GE SFP+ ports 1+1 power backup PoE+ Forwarding performance: 125 Mpps Switching capacity: 176 Gbps/672 Gbps
 <p>CloudEngine S5731-S48S4X</p>	<ul style="list-style-type: none"> 48 x GE SFP, 4 x 10GE SFP+ ports 1+1 power backup Forwarding performance: 125 Mpps Switching capacity: 176 Gbps/672 Gbps
 <p>CloudEngine S5731-S48S4X-A</p>	<ul style="list-style-type: none"> 48 x GE SFP, 4 x 10GE SFP+ ports AC power supply Forwarding performance: 125 Mpps Switching capacity: 176 Gbps/672 Gbps

Note: The value before the slash (/) refers to the device's switching capability, while the value after the slash (/) means the system's switching capability.

Fan Models

The following table lists the fan module applicable to the CloudEngine S5731-S.



Technical specifications of the fan module applicable to the CloudEngine S5731-S series





Fan Module	Technical Specifications	Applied Switch Model
 <p>FAN-023A-B</p>	<ul style="list-style-type: none"> Dimensions (W x D x H): 40 mm x 100.3 mm x 40 mm Number of fans: 1 Weight: 0.1 kg Maximum power consumption: 7.2 W Maximum fan speed: 18500±10% revolutions per minute (RPM) Maximum wind rate: 23 cubic feet per minute (CFM) Hot swap: Supported 	<ul style="list-style-type: none"> CloudEngine S5731-S24T4X CloudEngine S5731-S24P4X CloudEngine S5731-S48T4X CloudEngine S5731-S48P4X

Power Supply

The following table lists the power supplies applicable to the CloudEngine S5731-S.

Technical specifications of the power supplies applicable to the CloudEngine S5731-S series

Power Module	Technical Specifications	Applied Switch Model
 <p>PAC600S12-CB/DB/EB</p>	<ul style="list-style-type: none"> • Dimensions (H x W x D): 40 mm x 90 mm x 215 mm (1.6 in. x 3.5 in. x 8.5 in.) • Weight: 0.95 kg (2.09 lb) • Rated input voltage range: <ul style="list-style-type: none"> – 100 V AC to 240 V AC, 50/60 Hz – 240 V DC • Maximum input voltage range: <ul style="list-style-type: none"> – 90 V AC to 290 V AC, 45 Hz to 65 Hz – 190 V DC to 290 V DC • Maximum input current: <ul style="list-style-type: none"> – 100 V AC to 240 V AC: 8 A – 240 V DC: 4 A • Maximum output current: 50 A • Rated output voltage: 12 V • Maximum output power: 600 W • Hot swap: Supported 	<ul style="list-style-type: none"> • CloudEngine S5731-S24T4X • CloudEngine S5731-S48T4X
 <p>PAC1000S56-CB</p>	<ul style="list-style-type: none"> • Dimensions (H x W x D): 40 mm x 90 mm x 215 mm (1.6 in. x 3.5 in. x 8.5 in.) • Weight: 1.1 kg (2.43 lb) • Rated input voltage range: <ul style="list-style-type: none"> – 100 V AC to 130 V AC, 50/60 Hz – 200 V AC to 240 V AC, 50/60 Hz – 240 V DC • Maximum input voltage range: <ul style="list-style-type: none"> – 90 V AC to 290 V AC, 45 Hz to 65 Hz – 190 V DC to 290 V DC • Input current: <ul style="list-style-type: none"> – 100 V AC to 130 V AC: 12 A – 200 V AC to 240 V AC: 8 A – 240 V DC: 8 A • Maximum output current: <ul style="list-style-type: none"> – 100 V AC to 130 V AC input: 16.08 A – 200 V AC to 240 V AC input and 240 V DC input: 17.86 A • Maximum output power: <ul style="list-style-type: none"> – Total power: 900 W (100 V AC to 130 V AC input)/1000 W (200 V AC to 240 V AC input and 240 V DC input) • Hot swap: Supported 	<ul style="list-style-type: none"> • CloudEngine S5731-S24P4X • CloudEngine S5731-S48P4X <p>Note: Only V200R021C01 and later versions</p>

Power Module	Technical Specifications	Applied Switch Model
 <p>PDC1000S56-CB</p>	<ul style="list-style-type: none"> • Dimensions (H x W x D): 40 mm x 90 mm x 215 mm (1.6 in. x 3.5 in. x 8.5 in.) • Weight: 1.02 kg (2.25 lb) • Rated input voltage range: -48 V DC to -60 V DC • Maximum input voltage range: -38.4 V DC to -72 V DC • Maximum input current: 30 A • Maximum output current: 83.3 A • Maximum output power: 1000 W • Hot swap: Supported 	<ul style="list-style-type: none"> • CloudEngine S5731-S24P4X • CloudEngine S5731-S48P4X
 <p>PAC150S12-R</p>	<ul style="list-style-type: none"> • Dimensions (H x W x D): 40 mm x 90 mm x 215 mm (1.6 in. x 3.5 in. x 8.5 in.) • Weight: 0.8 kg (1.76 lb) • Rated input voltage range: 100 V AC to 240 V AC, 50/60 Hz • Maximum input voltage range: 90 V AC to 264 V AC, 47 Hz to 63 Hz • Maximum input current: 3 A • Maximum output current: 12.5 A • Maximum output power: 150 W • Hot swap: Supported 	<ul style="list-style-type: none"> • CloudEngine S5731-S24T4X • CloudEngine S5731-S32ST4X • CloudEngine S5731-S48T4X • CloudEngine S5731-S48S4X
 <p>PDC180S12-CR</p>	<ul style="list-style-type: none"> • Dimensions (H x W x D): 40 mm x 90 mm x 215 mm (1.6 in. x 3.5 in. x 8.5 in.) • Weight: 0.62 kg (1.37 lb) • Rated input voltage range: -48 V DC to -60 V DC • Maximum input voltage range: -38.4 V DC to -72 V DC • Maximum input current: 6 A • Maximum output current: 15 A • Maximum output power: 180 W • Hot swap: Supported 	<ul style="list-style-type: none"> • CloudEngine S5731-S24T4X • CloudEngine S5731-S32ST4X • CloudEngine S5731-S48T4X • CloudEngine S5731-S48S4X
 <p>PDC1000S12-DB</p>	<ul style="list-style-type: none"> • Dimensions (H x W x D): 40 mm x 90 mm x 215 mm (1.6 in. x 3.5 in. x 8.5 in.) • Weight: 1.02 kg (2.25 lb) • Rated input voltage range: -48 V DC to -60 V DC • Maximum input voltage range: -38.4 V DC to -72 V DC • Maximum input current: 30 A • Maximum output current: 83.3 A • Maximum output power: 1000 W • Hot swap: Supported 	<ul style="list-style-type: none"> • CloudEngine S5731-S24T4X • CloudEngine S5731-S48T4X

CloudEngine S5731-S series switches support PoE. They have two power module slots, each of which can have a 1000 W PoE power module installed.

The following table lists its power supply configurations.

Product Features and Highlights

Powerful Service Processing Capability and Multiple Security Control Mechanisms

- The CloudEngine S5731-S supports many Layer 2/Layer 3 multicast protocols such as PIM SM, PIM DM, PIM SSM, MLD, and IGMP snooping, to support multi-terminal high-definition video surveillance and video conferencing services.
- The CloudEngine S5731-S supports multiple Layer 3 features including OSPF, IS-IS, BGP, and VRRP, meeting enterprises' requirements on access and aggregation service bearing, and enabling a variety of voice, video, and data applications.
- The CloudEngine S5731-S supports MAC address authentication, 802.1x authentication, and Portal authentication, and implements dynamic delivery of policies (VLAN, QoS, and ACL) to users.
- The CloudEngine S5731-S provides a series of mechanisms to defend against DoS and user-targeted attacks. DoS attacks are targeted at switches and include SYN flood, Land, Smurf, and ICMP flood attacks. User-targeted attacks include bogus DHCP server attacks, IP/MAC address spoofing, DHCP request flood, and change of the DHCP CHADDR value.
- The CloudEngine S5731-S sets up and maintains a DHCP snooping binding table, and discards the packets that do not match the table entries. You can specify DHCP snooping trusted and untrusted ports to ensure that users connect only to the authorized DHCP server.
- The CloudEngine S5731-S supports strict ARP learning, which protects a network against ARP spoofing attacks to ensure normal network access.

Easy O&M

- The CloudEngine S5731-S supports Super Virtual Fabric (SVF), which virtualizes the "Core/aggregation + Access switch + AP" structure into a logical device. The CloudEngine S5731-S provides the innovative network management solution in the industry to simplify device management. It allows plug-and-play access switches and APs. In addition, the CloudEngine S5731-S supports service configuration templates. The templates are configured on core devices and automatically delivered to access devices, enabling centralized control, simplified service configuration, and flexible configuration modification. The CloudEngine S5731-S functions as a client in an SVF system.
- The CloudEngine S5731-S supports zero-touch deployment, replacement of faulty devices without additional configuration, USB-based deployment, batch configuration, and batch remote upgrade. The capabilities facilitate device deployment, upgrade, service provisioning, and other management and maintenance operations, and also greatly reduce O&M costs. The CloudEngine S5731-S can be managed using SNMP v1/v2c/v3, CLI, web-based network management system, or SSH v2.0. Additionally, it supports RMON, multiple log hosts, port traffic statistics collection, and network quality analysis, which facilitate network optimization and reconstruction.

Multiple Reliability Mechanisms

- The CloudEngine S5731-S supports iStack. This technology can virtualize up to nine physical switches into one logical switch. Member switches in a stack implement redundancy backup to improve device reliability and use inter-device link aggregation to improve link reliability. iStack provides high network scalability. You can increase a stack's ports, bandwidth, and processing capacity by simply adding member switches. iStack also simplifies device configuration and management. After a stack is set up, multiple physical switches are virtualized into one logical device. You can log in to any member switch in the stack to manage all the member switches in the stack.
- The CloudEngine S5731-S is equipped with two removable power modules that can work in 1+1 redundancy backup mode.
- In addition to traditional STP, RSTP, and MSTP, the CloudEngine S5731-S supports Huawei-developed Smart Ethernet Protection (SEP) technology and the latest Ethernet Ring Protection Switching (ERPS) standard. SEP is a ring protection protocol specific to the Ethernet link layer, and applies to various ring network topologies, such as open ring topology, closed ring topology, and cascading ring topology. This protocol is reliable, easy to maintain, and implements fast protection switching within 50 ms. ERPS is defined in ITU-T G.8032. It implements millisecond-level protection switching based on traditional Ethernet MAC and bridging functions.
- The CloudEngine S5731-S supports Smart Link. One CloudEngine S5731-S switch can connect to multiple aggregation switches through multiple links, implementing backup of uplinks and significantly improving reliability of access devices.
- The CloudEngine S5731-S supports Ethernet OAM (IEEE 802.3ah/802.1ag) to detect link faults quickly.

Mature IPv6 Technologies

- The CloudEngine S5731-S uses the mature, stable VRP platform and supports IPv4/IPv6 dual stack, IPv6 RIPng, and IPv6 over IPv4 tunnels (including manual, 6-to-4, and ISATAP tunnels). With these IPv6 features, the CloudEngine S5731-S can be deployed on a pure IPv4 network, a pure IPv6 network, or a shared IPv4/IPv6 network, helping achieve IPv4-to-IPv6 transition.

PoE Power Supply

- Perpetual PoE: When a PoE switch is rebooted after the software version is upgraded, the power supply to PDs is not interrupted. This capability ensures that PDs are not powered off during the switch reboot.
- Fast PoE: PoE switches can supply power to PDs within 10s after they are powered on. This is different from common switches that generally take 1 to 3 minutes to start to supply power to PDs. When a PoE switch reboots due to a power failure, the PoE switch continues to supply power to the PDs immediately after being powered on without waiting until it finishes reboot. This greatly shortens the power failure time of PDs.

NOTE

For more information about PoE, visit

<https://e.huawei.com/en/material/onLineView?materialid=e28cc3ad158140e8af1547bc510ecd34>

Intelligent O&M

- The CloudEngine S5731-S provides telemetry technology to collect device data in real time and send the data to Huawei campus network analyzer CampusInsight. The CampusInsight analyzes network data based on the intelligent fault identification algorithm, accurately displays the real-time network status, effectively demarcates and locates faults in a timely manner, and identifies network problems that affect user experience, accurately guaranteeing user experience.
- The CloudEngine S5731-S supports a variety of intelligent O&M features for audio and video services, including the enhanced Media Delivery Index (eMDI). With this eMDI function, the switch can function as a monitored node to periodically conduct statistics and report audio and video service indicators to the CampusInsight platform. In this way, the CampusInsight platform can quickly demarcate audio and video service quality faults based on the results of multiple monitored nodes.

Intelligent Upgrade

- Switches support the intelligent upgrade feature. Specifically, switches obtain the version upgrade path and download the newest version for upgrade from the Huawei Online Upgrade Platform (HOUP). The entire upgrade process is highly automated and achieves one-click upgrade. In addition, preloading the version is supported, which greatly shortens the upgrade time and service interruption time.
- The intelligent upgrade feature greatly simplifies device upgrade operations and makes it possible for the customer to upgrade the version independently. This greatly reduces the customer's maintenance costs. In addition, the upgrade policies on the HOUP platform standardize the upgrade operations, which greatly reduces the risk of upgrade failures.

Big Data Security Collaboration

- The CloudEngine S5731-S switches use NetStream to collect campus network data and then report such data to the Huawei HiSec Insight. The purposes of doing so are to detect network security threats, display the security posture across the entire network, and enable automated or manual response to security threats. The HiSec Insight delivers the security policies to the iMaster NCE-Campus. The iMaster NCE-Campus then delivers such policies to switches that will handle security events accordingly. All these ensure campus network security.
- The CloudEngine S5731-S supports Encrypted Communication Analytics(ECA). It uses built-in ECA probes to extract characteristics of encrypted streams based on NetStream sampling and Service Awareness(SA), generates metadata, and reports the metadata to HiSec Insight. The HiSec Insight uses the AI algorithm to train the traffic model and compare characteristics of extracted encrypted traffic to identify malicious traffic. The HiSec Insight displays detection results on the GUI, provides threat handling suggestions, and automatically isolates threats with the iMaster NCE-Campus to ensure campus network security.
- The CloudEngine S5731-S supports deception. It functions as a sensor to detect threats such as IP address scanning and port scanning on a network and lures threat traffic to the honeypot for further checks. The honeypot performs in-depth interaction with the initiator of the threat traffic, records various application-layer attack methods of the initiator, and reports security logs to the HiSec Insight. The HiSec Insight analyzes security logs. If the HiSec Insight determines that the suspicious traffic is an attack, it generates an alarm and provides handling suggestions. After the administrator confirms the alarm, the HiSec Insight delivers a policy to the iMaster NCE-Campus. The iMaster NCE-Campus delivers the policy to the switch for security event processing, ensuring campus network security.

OPS

- Open Programmability System (OPS) is an open programmable system based on the Python language. IT administrators can program the O&M functions of a switch through Python scripts to quickly innovate functions and implement intelligent O&M.

Licensing

CloudEngine S5731-S supports both the traditional feature-based licensing mode and the latest Huawei IDN One Software (N1 mode for short) licensing mode. The N1 mode is ideal for campus network deployments in enterprise private cloud mode, and greatly enhances the customer experiences in purchasing and upgrading software services with simplicity.

Software Package Features in N1 Mode

Switch Functions	N1 Basic Software	N1 Foundation Software Package	N1 Advanced Software Package
Basic network functions: Layer 2 functions, IPv4, IPv6, SVF, and others Note: For details, see the Service Features	√	√	√
Basic network automation based on the iMaster NCE-Campus: <ul style="list-style-type: none"> • Basic automation: Plug-and-play • Basic monitoring: Application visualization • NE management: Image and topology management and discovery 	×	√	√
Advanced network automation and intelligent O&M: VxLAN, User access authentication, free mobility, and CampusInsight basic functions	×	×	√

Note: Only V200R019C00 and later versions can support N1 mode

Product Specifications

Functions and Features

Except for special instructions, the following features are supported by CloudEngine S5731-S with N1 basic software.

Function and feature metrics for the CloudEngine S5731-S series

Function and Feature		Description	CloudEngine S5731-S
Ethernet features	Ethernet basics	Full-duplex, half-duplex, and auto-negotiation	Yes
		Rate auto-negotiation on an interface	Yes
		Auto MDI and MDI-X	Yes
		Flow control on an interface	Yes
		Jumbo frames	Yes
		Link aggregation	Yes
		Load balancing among links of a trunk	Yes

Function and Feature		Description	CloudEngine S5731-S
		Transparent transmission of Layer 2 protocol packets	Yes
		Device Link Detection Protocol (DLDP)	Yes
		Link Layer Discovery Protocol (LLDP)	Yes
		Link Layer Discovery Protocol-Media Endpoint Discovery (LLDP-MED)	Yes
		Interface isolation	Yes
		Broadcast traffic suppression on an interface	Yes
		Multicast traffic suppression on an interface	Yes
		Unknown unicast traffic suppression on an interface	Yes
		VLAN broadcast traffic suppression	Yes
		VLAN multicast traffic suppression	Yes
		VLAN unknown unicast traffic suppression	Yes
	VLAN	VLAN specification	4094
	VLAN	VLANIF interface specification	1024
	VLAN	Access mode	Yes
	VLAN	Trunk mode	Yes
	VLAN	Hybrid mode	Yes
	VLAN	QinQ mode	Yes
	VLAN	Default VLAN	Yes
	VLAN	VLAN assignment based on interfaces	Yes
	VLAN	VLAN assignment based on protocols	Yes
	VLAN	VLAN assignment based on IP subnets	Yes
	VLAN	VLAN assignment based on MAC addresses	Yes
	VLAN	VLAN assignment based on MAC address + IP address	Yes
	VLAN	VLAN assignment based on MAC address + IP address + interface number	Yes
	VLAN	Adding double VLAN tags to packets based on interfaces	Yes
	VLAN	Super-VLAN	Yes
	VLAN	Super-VLAN specification	256
	VLAN	Sub-VLAN	Yes
	VLAN	Sub-VLAN specification	1K
	VLAN	VLAN mapping	Yes

Function and Feature	Description	CloudEngine S5731-S	
	Selective QinQ	Yes	
	MUX VLAN	Yes	
	Voice VLAN	Yes	
	Guest VLAN	Yes	
	GVRP	GARP	Yes
		GVRP	Yes
	VCMP	VCMP	Yes
	MAC	MAC address	64K
		Automatic learning of MAC addresses	Yes
		Automatic aging of MAC addresses	Yes
		Static, dynamic, and blackhole MAC address entries	Yes
		Interface-based MAC address learning limiting	Yes
		Sticky MAC	Yes
		MAC address flapping detection	Yes
		Configuring MAC address learning priorities for interfaces	Yes
		MAC address spoofing defense	Yes
		Port bridge	Yes
		ARP	Static ARP
	Dynamic ARP		Yes
	ARP entry		16K
	ARP aging detection		Yes
	Intra-VLAN proxy ARP		Yes
	Inter-VLAN proxy ARP		Yes
Routed proxy ARP	Yes		
Multi-egress-interface ARP	Yes		
Ethernet loop protection	MSTP	STP	Yes
		RSTP	Yes
		MSTP	Yes
		VBST	Yes
		BPDU protection	Yes
		Root protection	Yes
		Loop protection	Yes
		Defense against TC BPDU attacks	Yes

Function and Feature		Description	CloudEngine S5731-S	
	Loopback detection	Loop detection on an interface	Yes	
	SEP	SEP	Yes	
	Smart Link	Smart Link	Yes	
		Smart Link multi-instance	Yes	
		Monitor Link	Yes	
	RRPP	RRPP	Yes	
		Single RRPP ring	Yes	
		Tangent RRPP ring	Yes	
		Intersecting RRPP ring	Yes	
		Hybrid networking of RRPP rings and other ring networks	Yes	
	ERPS	G.8032 v1	Yes	
		G.8032 v2	Yes	
		ERPS semi-ring topology	Yes	
		ERPS closed-ring topology	Yes	
	IPv4/IPv6 forwarding	IPv4 and unicast routing	IPv4 static routing	Yes
			VRF	Yes
DHCP client			Yes	
DHCP server			Yes	
DHCP relay			Yes	
DHCP policy VLAN			Yes	
URPF check			Yes	
Routing policies			Yes	
IPv4 routes			16K	
RIPv1			Yes	
RIPv2			Yes	
OSPF			Yes	
BGP			Yes	
MBGP			Yes	
IS-IS			Yes	
Policy-based routing (PBR)			Yes	
Multicast routing features		IGMPv1/v2/v3	Yes	
		PIM-DM	Yes	
		PIM-SM	Yes	

Function and Feature	Description	CloudEngine S5731-S	
	MSDP	Yes	
	IPv4 multicast routes	1K	
	IPv6 multicast routes	1K	
	Multicast routing policies	Yes	
	RPF	Yes	
	IPv6 features	IPv6 protocol stack	Yes
		ND	Yes
		ND entry	8K
		ND snooping	Yes
		DHCPv6 snooping	Yes
		RIPng	Yes
		DHCPv6 server	Yes
		DHCPv6 relay	Yes
		OSPFv3	Yes
		BGP4+	Yes
		IS-IS for IPv6	Yes
		IPv6 routes	8K
		VRRP6	Yes
		MLDv1/v2	Yes
	PIM-DM for IPv6	Yes	
	PIM-SM for IPv6	Yes	
IPv6 transition technology	IPv6 manual tunneling	Yes	
Layer 2 multicast features	-	IGMPv1/v2/v3 snooping	Yes
	-	IGMP snooping proxy	Yes
	-	MLD snooping	Yes
	-	Multicast traffic suppression	Yes
	-	Inter-VLAN multicast replication	Yes
Device reliability	BFD	Single-hop BFD	Yes
		BFD for static routes	Yes
		BFD for OSPF	Yes
		BFD for IS-IS	Yes
		BFD for BGP	Yes
		BFD for PIM	Yes
		BFD for VRRP	Yes

Function and Feature		Description	CloudEngine S5731-S
	Stacking	Service interface-based stacking	Yes
		Maximum number of stacked devices	9
		Stack bandwidth (Bidirectional)	80Gbps(MAX)
	VRRP	VRRP standard protocol	Yes
Ethernet OAM	EFM (802.3ah)	Automatic discovery of links	Yes
		Link fault detection	Yes
		Link troubleshooting	Yes
		Remote loopback	Yes
	CFM (802.1ag)	Software-level CCM	Yes
		802.1ag MAC ping	Yes
		802.1ag MAC trace	Yes
	OAM association	Association between 802.1ag and 802.3ah	Yes
	Y.1731	Unidirectional delay and jitter measurement	Yes
		Bidirectional delay and jitter measurement	Yes
QoS features	Traffic classification	Traffic classification based on ACLs	Yes
		Matching the simple domains of packets	Yes
	Traffic behavior	Traffic filtering	Yes
		Traffic policing (CAR)	Yes
		Modifying the packet priorities	Yes
		Modifying the simple domains of packets	Yes
		Modifying the packet VLANs	Yes
	Traffic shaping	Traffic shaping on an egress interface	Yes
		Traffic shaping on queues on an interface	Yes
	Congestion avoidance	Weighted Random Early Detection (WRED) on queues	Yes
		Tail drop	Yes
	Congestion management	Priority Queuing (PQ)	Yes
		Weighted Deficit Round Robin (WDRR)	Yes
		PQ+WDRR	Yes
		Weighted Round Robin (WRR)	Yes
		PQ+WRR	Yes
ACL	Packet filtering at Layer 2 to Layer 4	Basic IPv4 ACL	Yes
		Advanced IPv4 ACL	Yes
		Basic IPv6 ACL	Yes
		Advanced IPv6 ACL	Yes

Function and Feature		Description	CloudEngine S5731-S
		Layer 2 ACL	Yes
		User group ACL	Yes
		User-defined ACL	Yes
Configuration and maintenance	Login and configuration management	Command line interface (CLI)-based configuration	Yes
		Console terminal service	Yes
		Telnet terminal service	Yes
		SSH v1.5	Yes
		SSH v2.0	Yes
		SNMP-based NMS for unified configuration	Yes
		Web page-based configuration and management	Yes
		EasyDeploy (client)	Yes
		EasyDeploy (commander)	Yes
		SVF	Yes
		Cloud management	Yes
		OPS	Yes
		File system	Directory and file management
	File upload and download		Yes
	Monitoring and maintenance	Deception	Yes
		ECA	Yes
		eMDI	Yes
		Hardware monitoring	Yes
		Log information output	Yes
		Alarm information output	Yes
		Debugging information output	Yes
		Port mirroring	Yes
		Flow mirroring	Yes
Remote mirroring		Yes	
Energy saving		Yes	
Version upgrade	Version upgrade	Yes	
	Version rollback	Yes	
Security	ARP security	ARP packet rate limiting	Yes
		ARP anti-spoofing	Yes
		Association between ARP and STP	Yes

Function and Feature	Description	CloudEngine S5731-S	
	ARP gateway anti-collision	Yes	
	Dynamic ARP Inspection (DAI)	Yes	
	Static ARP Inspection (SAI)	Yes	
	Egress ARP Inspection (EAI)	Yes	
	IP security	ICMP attack defense	Yes
		IPSG for IPv4	Yes
		IPSG user capacity	3000
		IPSG for IPv6	Yes
		IPSGv6 user capacity	1500
	Local attack defense	CPU attack defense	Yes
	MFF	MFF	Yes
	DHCP snooping	DHCP snooping	Yes
		Option 82 function	Yes
		Dynamic rate limiting for DHCP packets	Yes
	Attack defense	Defense against malformed packet attacks	Yes
		Defense against UDP flood attacks	Yes
		Defense against TCP SYN flood attacks	Yes
		Defense against ICMP flood attacks	Yes
		Defense against packet fragment attacks	Yes
		Local URPF	Yes
	User access and authentication	AAA	Local authentication
Local authorization			Yes
RADIUS authentication			Yes
RADIUS authorization			Yes
RADIUS accounting			Yes
HWTACACS authentication			Yes
HWTACACS authorization			Yes
HWTACACS accounting			Yes
NAC		802.1X authentication	Yes
		MAC address authentication	Yes
		Portal authentication	Yes
		Hybrid authentication	Yes
Policy association		Functioning as the control device	Yes
Network		-	Ping

Function and Feature		Description	CloudEngine S5731-S
management		Tracert	Yes
		NQA	Yes
		NTP	Yes
		iPCA	Yes
		Smart Application Control (SAC)	Yes
		NetStream	Yes
		SNMP v1	Yes
		SNMP v2c	Yes
		SNMP v3	Yes
		HTTP	Yes
		HTTPS	Yes
		RMON	Yes
		RMON2	Yes
		NETCONF/YANG	Yes
VXLAN	-	VXLAN Layer 2 gateway	Yes, require additional license
		VXLAN Layer 3 gateway	Yes, require additional license
		Centralized gateway	Yes, require additional license
		Distributed gateway	Yes, require additional license
		BGP-EVPN	Yes, require additional license
		BGP-EVPN neighbor capacity	256, require additional license
Interoperability	-	VLAN-based Spanning Tree (VBST)	Yes
		Link-type Negotiation Protocol (LNP)	Yes
		VLAN Central Management Protocol (VCMP)	Yes

NOTE

This content is applicable only to regions outside mainland China. Huawei reserves the right to interpret this content.

Hardware Specifications

The following table lists the hardware specifications of the CloudEngine S5731-S.

Hardware specifications of CloudEngine S5731-S models

Item		CloudEngine S5731-S24T4X	CloudEngine S5731-S24P4X	CloudEngine S5731-S48T4X	CloudEngine S5731-S48P4X
Physical specifications	Dimensions (H x W x D, mm)	43.6 x 442 x 420	43.6 x 442 x 420	43.6 x 442 x 420	43.6 x 442 x 420
	Chassis height	1 U	1 U	1 U	1 U
	Chassis weight (including	8.4 kg	8.6 kg	8.55 kg	8.9 kg

Item		CloudEngine S5731-S24T4X	CloudEngine S5731-S24P4X	CloudEngine S5731-S48T4X	CloudEngine S5731-S48P4X
	packaging)				
Fixed port	GE port	24	24	48	48
	10GE port	4	4	4	4
Management port	ETH port	Supported	Supported	Supported	Supported
	Console port (RJ45)	Supported	Supported	Supported	Supported
	USB port	USB 2.0	USB 2.0	USB 2.0	USB 2.0
CPU	Frequency	1.4 GHz	1.4 GHz	1.4 GHz	1.4 GHz
	Cores	4	4	4	4
Storage	Memory (RAM)	2 GB	2 GB	2 GB	2 GB
	Flash memory	1 GB	1 GB	1 GB	1 GB
Power supply system	Power supply type	<ul style="list-style-type: none"> 150 W AC (pluggable) 600 W AC (pluggable) 180 W DC (pluggable) 1000 W DC (pluggable) 	<ul style="list-style-type: none"> 1000 W PoE AC (pluggable) 1000 W PoE DC (pluggable) 	<ul style="list-style-type: none"> 150 W AC (pluggable) 600 W AC (pluggable) 180 W DC (pluggable) 1000 W DC (pluggable) 	<ul style="list-style-type: none"> 1000 W PoE AC (pluggable) 1000 W PoE DC (pluggable)
	Power supply specification	For details about power supplies, see the section Power Supply .	For details about power supplies, see the section Power Supply .	For details about power supplies, see the section Power Supply .	For details about power supplies, see the section Power Supply .
	Rated voltage range	<ul style="list-style-type: none"> AC input (150 W AC): 100 V AC to 240 V AC, 50/60 Hz AC input (600 W AC): 100 V AC to 240 V AC, 50/60 Hz DC input (180/1000 W DC): -48 VDC to -60 V DC 	<ul style="list-style-type: none"> AC input (1000 W AC PoE): 100 V AC to 240 V AC, 50/60 Hz DC input (1000 W AC PoE): 240 V DC DC input (1000 W DC PoE): -48 VDC to -60 V DC 	<ul style="list-style-type: none"> AC input (150 W AC): 100 V AC to 240 V AC, 50/60 Hz AC input (600 W AC): 100 V AC to 240 V AC, 50/60 Hz DC input (180/1000 W DC): -48 VDC to -60 V DC 	<ul style="list-style-type: none"> AC input (1000 W AC PoE): 100 V AC to 240 V AC, 50/60 Hz DC input (1000 W AC PoE): 240 V DC DC input (1000 W DC PoE): -48 VDC to -60 V DC
	Maximum voltage range	<ul style="list-style-type: none"> AC input (150 W AC): 90 V AC to 264 V AC, 47 Hz to 63 Hz AC input (600 W AC): 90 V AC to 290 V AC, 45 Hz to 65 Hz High-voltage 	<ul style="list-style-type: none"> AC input (1000 W AC PoE): 90 V AC to 290 V AC, 45 Hz to 65 Hz High-voltage DC input (1000 W AC PoE): 190 V DC to 290 V DC (meeting 	<ul style="list-style-type: none"> AC input (150 W AC): 90 V AC to 264 V AC, 47 Hz to 63 Hz AC input (600 W AC): 90 V AC to 290 V AC, 45 Hz to 65 Hz High-voltage 	<ul style="list-style-type: none"> AC input (1000 W AC PoE): 90 V AC to 290 V AC, 45 Hz to 65 Hz High-voltage DC input (1000 W AC PoE): 190 V DC to 290 V DC (meeting

Item		CloudEngine S5731-S24T4X	CloudEngine S5731-S24P4X	CloudEngine S5731-S48T4X	CloudEngine S5731-S48P4X
		DC input (600 W AC): 190 V DC to 290 V DC (meeting 240 V high-voltage DC certification) <ul style="list-style-type: none"> DC input (180/1000 W DC): -38.4 V DC to -72V DC 	240 V high-voltage DC certification) <ul style="list-style-type: none"> DC input (1000 W DC PoE): -38.4 V DC to -72V DC 	DC input (600 W AC): 190 V DC to 290 V DC (meeting 240 V high-voltage DC certification) <ul style="list-style-type: none"> DC input (180/1000 W DC): -38.4 V DC to -72V DC 	240 V high-voltage DC certification) <ul style="list-style-type: none"> DC input (1000 W DC PoE): -38.4 V DC to -72V DC
	Maximum power consumption	114 W	<ul style="list-style-type: none"> 121 W (without PD) 977 W (with PD, PD power consumption of 720 W) 	124 W	<ul style="list-style-type: none"> 132 W (without PD) 1750 W (with PD, PD power consumption of 1440 W)
	Power consumption in the case of 30% traffic load ¹	88 W	95 W	101 W	108 W
	Power consumption in the case of 100% traffic load ¹	91 W	97 W	104 W	113 W
	Minimum power consumption	74 W	82 W	77 W	86 W
Heat dissipation system	Heat dissipation mode	Air-cooled heat dissipation and intelligent fan speed adjustment	Air-cooled heat dissipation and intelligent fan speed adjustment	Air-cooled heat dissipation and intelligent fan speed adjustment	Air-cooled heat dissipation and intelligent fan speed adjustment
	Number of fan modules	Pluggable dual fans	Pluggable dual fans	Pluggable dual fans	Pluggable dual fans
	Airflow	Air flows in from the front side and exhausts from the rear panel.	Air flows in from the front side and exhausts from the rear panel.	Air flows in from the front side and exhausts from the rear panel.	Air flows in from the front side and exhausts from the rear panel.
	Maximum heat dissipation of the device (BTU/hour)	389	<ul style="list-style-type: none"> 413 (without PDs) 3334 (with PDs) 	423	<ul style="list-style-type: none"> 451 (without PDs) 5973 (with PDs)
Environment parameters	Long-term operating temperature	<ul style="list-style-type: none"> 0-1800 m: -5°C to 45°C 1800-5000 m: The operating temperature decreases 1°C every time the altitude increases 220 	<ul style="list-style-type: none"> 0-1800 m: -5°C to 45°C 1800-5000 m: The operating temperature decreases 1°C every time the altitude increases 220 	<ul style="list-style-type: none"> 0-1800 m: -5°C to 45°C 1800-5000 m: The operating temperature decreases 1°C every time the altitude increases 220 	<ul style="list-style-type: none"> 0-1800 m: -5°C to 45°C 1800-5000 m: The operating temperature decreases 1°C every time the altitude increases 220

Item		CloudEngine S5731-S24T4X	CloudEngine S5731-S24P4X	CloudEngine S5731-S48T4X	CloudEngine S5731-S48P4X
		m.	m.	m.	m.
	Storage temperature	-40°C to +70°C	-40°C to +70°C	-40°C to +70°C	-40°C to +70°C
	Relative humidity	5%–95% (non-condensing)	5%–95% (non-condensing)	5%–95% (non-condensing)	5%–95% (non-condensing)
	Operating altitude	5000 m	5000 m	5000 m	5000 m
	Noise under normal temperature (sound power)	57.5 dB (A)	62.3 dB (A)	57.5 dB (A)	62.3 dB (A)
	Noise under high temperature (sound power)	70.9 dB (A)	71.8 dB (A)	70.9 dB (A)	71.8 dB (A)
	Noise under normal temperature (sound pressure)	47.5 dB (A)	52.8 dB (A)	47.5 dB (A)	52.8 dB (A)
	Surge protection specification (RJ45 service port)	Common mode: ±6 kV	Common mode: ±6 kV	Common mode: ±6 kV	Common mode: ±6 kV
	Surge protection specification (power port)	<ul style="list-style-type: none"> AC power port: ±6 kV in differential mode, ±6 kV in common mode DC power port: ±2 kV in differential mode, ±4 kV in common mode 	<ul style="list-style-type: none"> AC power port: ±6 kV in differential mode, ±6 kV in common mode DC power port: ±2 kV in differential mode, ±4 kV in common mode 	<ul style="list-style-type: none"> AC power port: ±6 kV in differential mode, ±6 kV in common mode DC power port: ±2 kV in differential mode, ±4 kV in common mode 	<ul style="list-style-type: none"> AC power port: ±6 kV in differential mode, ±6 kV in common mode DC power port: ±2 kV in differential mode, ±4 kV in common mode
Reliability	MTBF (year) ²	57.73	57.21	55.31	54.96
	MTTR (hour)	2	2	2	2
	Availability	> 0.99999	> 0.99999	> 0.99999	> 0.99999
Certification		<ul style="list-style-type: none"> EMC certification Safety certification Manufacturing certification <p>For details about certifications, see the section Safety and Regulatory Compliance.</p>	<ul style="list-style-type: none"> EMC certification Safety certification Manufacturing certification <p>For details about certifications, see the section Safety and Regulatory Compliance.</p>	<ul style="list-style-type: none"> EMC certification Safety certification Manufacturing certification <p>For details about certifications, see the section Safety and Regulatory Compliance.</p>	<ul style="list-style-type: none"> EMC certification Safety certification Manufacturing certification <p>For details about certifications, see the section Safety and Regulatory Compliance.</p>

Item		CloudEngine S5731-S32ST4X	CloudEngine S5731-S32ST4X-A/D	CloudEngine S5731-S48S4X	CloudEngine S5731-S48S4X-A
Physical specifications	Dimensions (H x W x D, mm)	43.6 x 442 x 420	43.6 x 442 x 220	43.6 x 442 x 420	43.6 x 442 x 220
	Chassis height	1 U	1 U	1 U	1 U
	Chassis weight (including packaging)	7.35 kg	4.02/3.87 kg	7.51 kg	4.69 kg
Fixed port	GE port	32	32	48	48
	10GE port	4	4	4	4
Management port	ETH port	Supported	Supported	Supported	Supported
	Console port (RJ45)	Supported	Supported	Supported	Supported
	USB port	USB 2.0	USB 2.0	USB 2.0	USB 2.0
CPU	Frequency	1.4 GHz	1.4 GHz	1.4 GHz	1.4 GHz
	Cores	4	4	4	4
Storage	Memory (RAM)	2 GB	2 GB	2 GB	2 GB
	Flash memory	1 GB	1 GB	1 GB	1 GB
Power supply system	Power supply type	<ul style="list-style-type: none"> 150 W AC (pluggable) 600 W AC (pluggable) 180 W DC (pluggable) 1000 W DC (pluggable) 	Built-in AC/DC	<ul style="list-style-type: none"> 150 W AC (pluggable) 600 W AC (pluggable) 180 W DC (pluggable) 1000 W DC (pluggable) 	Built-in AC
	Power supply specification	For details about power supplies, see the section Power Supply .	For details about power supplies, see the section Power Supply .	For details about power supplies, see the section Power Supply .	For details about power supplies, see the section Power Supply .
	Rated voltage range	<ul style="list-style-type: none"> AC input (150 W AC): 100 V AC to 240 V AC, 50/60 Hz AC input (600 W AC): 100 V AC to 240 V AC, 50/60 Hz DC input (180/1000 W DC): -48 VDC to -60 V DC 	AC model: <ul style="list-style-type: none"> AC input : 100 V AC to 240 V AC, 50/60 Hz DC input: 240V DC DC model: -48 VDC to -60 V DC	<ul style="list-style-type: none"> AC input (150 W AC): 100 V AC to 240 V AC, 50/60 Hz AC input (600 W AC): 100 V AC to 240 V AC, 50/60 Hz DC input (180/1000 W DC): -48 VDC to -60 V DC 	<ul style="list-style-type: none"> AC input: 100 V AC to 240 V AC, 50/60 Hz DC input: 240V DC
	Maximum voltage range	<ul style="list-style-type: none"> AC input (150 W AC): 90 V AC to 264 V 	AC model: <ul style="list-style-type: none"> AC input: 90 V AC to 290 V 	<ul style="list-style-type: none"> AC input (150 W AC): 90 V AC to 264 V 	<ul style="list-style-type: none"> AC input : 90 V AC to 290 V AC, 47 Hz to

Item		CloudEngine S5731-S32ST4X	CloudEngine S5731-S32ST4X-A/D	CloudEngine S5731-S48S4X	CloudEngine S5731-S48S4X-A
		<ul style="list-style-type: none"> AC, 47 Hz to 63 Hz AC input (600 W AC): 90 V AC to 290 V AC, 45 Hz to 65 Hz High-voltage DC input (600 W AC): 190 V DC to 290 V DC (meeting 240 V high-voltage DC certification) DC input (180/1000 W DC): -38.4 V DC to -72V DC 	<ul style="list-style-type: none"> AC, 47 Hz to 63 Hz High-voltage DC input: 190 V DC to 290 V DC (meeting 240 V high-voltage DC certification) DC model: - 38.4 V DC to -72V DC	<ul style="list-style-type: none"> AC, 47 Hz to 63 Hz AC input (600 W AC): 90 V AC to 290 V AC, 45 Hz to 65 Hz High-voltage DC input (600 W AC): 190 V DC to 290 V DC (meeting 240 V high-voltage DC certification) DC input (180/1000 W DC): -38.4 V DC to -72V DC 	<ul style="list-style-type: none"> 63 Hz High-voltage DC input: 190 V DC to 290 V DC (meeting 240 V high-voltage DC certification)
	Maximum power consumption	120 W	94 W	142 W	121 W
	Power consumption in the case of 30% traffic load ¹	73.6 W	66.9 W/69.5 W	93.7 W	87.9 W
	Power consumption in the case of 100% traffic load ¹	76.74 W	67.8 W/70.4 W	95.2 W	89.5 W
	Minimum power consumption	44.5 W	41.8 W/41.5 W	50.5 W	47.3 W
Heat dissipation system	Heat dissipation mode	Air-cooled heat dissipation and intelligent fan speed adjustment	Air-cooled heat dissipation and intelligent fan speed adjustment	Air-cooled heat dissipation and intelligent fan speed adjustment	Air-cooled heat dissipation and intelligent fan speed adjustment
	Number of fan modules	Built-in tripple fans	Built-in dual fans	Built-in tripple fans	Built-in dual fans
	Airflow	Air flows in from the front side and left, exhausts from the rear panel.	Air flows in from the front and left sides,exhausts from the right side.	Air flows in from the front side and left, exhausts from the rear panel.	Air flows in from the front and left sides,exhausts from the right side.
	Maximum heat dissipation of the device (BTU/hour)	406.82	<ul style="list-style-type: none"> 320.46 (AC model) 318.66 (DC model) 	484.38	413
Environment parameters	Long-term operating temperature	<ul style="list-style-type: none"> 0-1800 m: -5°C to 45°C 1800-5000 m: 	<ul style="list-style-type: none"> 0-1800 m: -5°C to 45°C 1800-5000 m: 	<ul style="list-style-type: none"> 0-1800 m: -5°C to 45°C 1800-5000 m: 	<ul style="list-style-type: none"> 0-1800 m: -5°C to 45°C 1800-5000 m:

Item		CloudEngine S5731-S32ST4X	CloudEngine S5731-S32ST4X-A/D	CloudEngine S5731-S48S4X	CloudEngine S5731-S48S4X-A
		The operating temperature decreases 1°C every time the altitude increases 220 m.	The operating temperature decreases 1°C every time the altitude increases 220 m.	The operating temperature decreases 1°C every time the altitude increases 220 m.	The operating temperature decreases 1°C every time the altitude increases 220 m.
	Storage temperature	-40°C to +70°C	-40°C to +70°C	-40°C to +70°C	-40°C to +70°C
	Relative humidity	5%–95% (non-condensing)	5%–95% (non-condensing)	5%–95% (non-condensing)	5%–95% (non-condensing)
	Operating altitude	5000 m	5000 m	5000 m	5000 m
	Noise under normal temperature (sound power)	45.47 dB(A)	46.8dB(A)	61dB(A)	56.8dB(A)
	Noise under high temperature (sound power)	73.74 dB(A)	73.2dB(A)	75.7dB(A)	73.9dB(A)
	Noise under normal temperature (sound pressure)	31.79 dB(A)	35dB(A)	46dB(A)	44.8dB(A)
	Surge protection specification (RJ45 service port)	±7 kV	±7 kV	NA	NA
	Surge protection specification (power port)	<ul style="list-style-type: none"> AC power port: ±6 kV in differential mode, ±6 kV in common mode DC power port: ±2 kV in differential mode, ±4 kV in common mode 	<ul style="list-style-type: none"> AC power port: ±6 kV in differential mode, ±6 kV in common mode DC power port: ±2 kV in differential mode, ±4 kV in common mode 	<ul style="list-style-type: none"> AC power port: ±6 kV in differential mode, ±6 kV in common mode DC power port: ±2 kV in differential mode, ±4 kV in common mode 	<ul style="list-style-type: none"> Differential mode: ±6 kV Common mode: ±6 kV
Reliability	MTBF (year) ²	71.54	32.56	64.97	31.39
	MTTR (hour)	2	2	2	2
	Availability	> 0.99999	> 0.99999	> 0.99999	> 0.99999
Certification		<ul style="list-style-type: none"> EMC certification Safety certification Manufacturing certification For details about	<ul style="list-style-type: none"> EMC certification Safety certification Manufacturing certification For details about	<ul style="list-style-type: none"> EMC certification Safety certification Manufacturing certification For details about	<ul style="list-style-type: none"> EMC certification Safety certification Manufacturing certification For details about

Item	CloudEngine S5731-S32ST4X	CloudEngine S5731-S32ST4X-A/D	CloudEngine S5731-S48S4X	CloudEngine S5731-S48S4X-A
	certifications, see the section Safety and Regulatory Compliance .	certifications, see the section Safety and Regulatory Compliance .	certifications, see the section Safety and Regulatory Compliance .	certifications, see the section Safety and Regulatory Compliance .

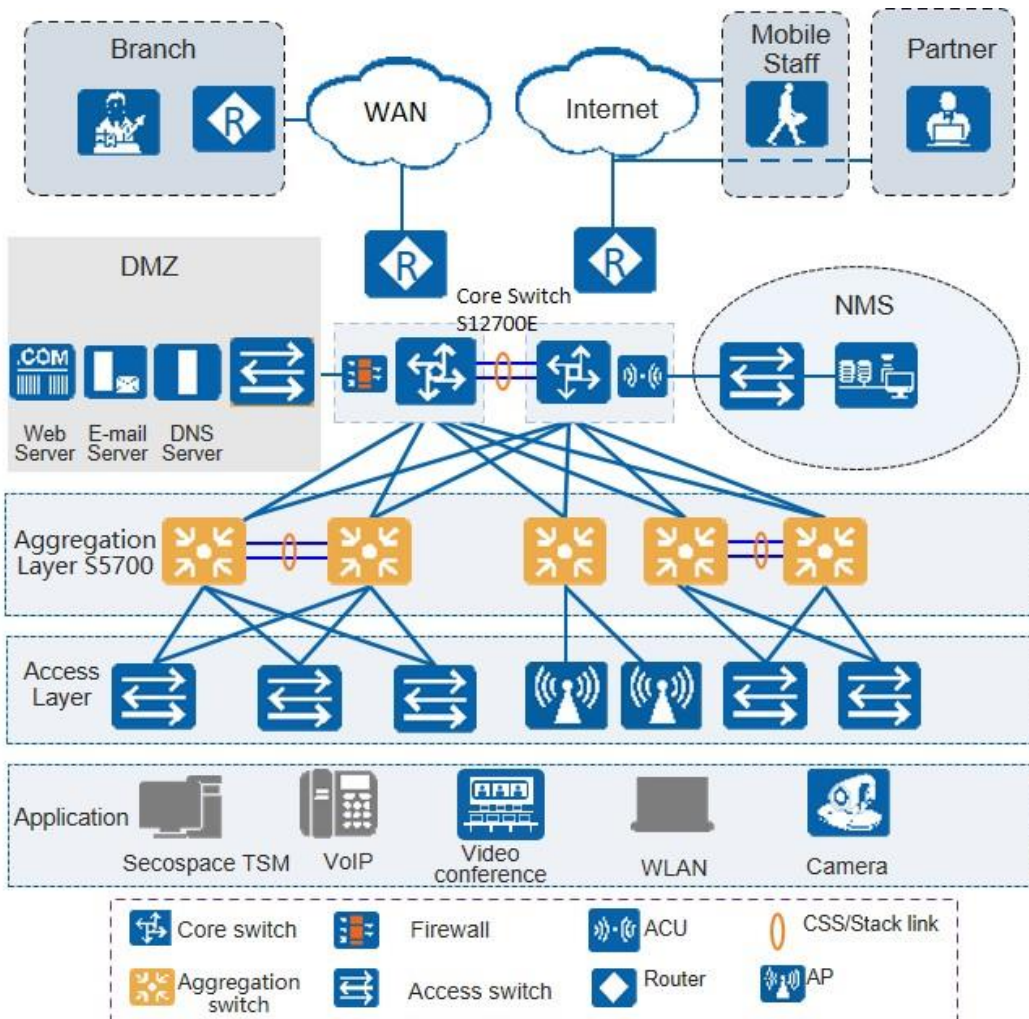
NOTE

- 1: The power consumption under different load conditions is calculated according to the ATIS standard. Additionally, the EEE function is enabled and there is no PoE power output.
- 2: The reliability parameter values are calculated based on the typical configuration of the device. The parameter values vary according to the modules configured by the customer.

Networking and Applications

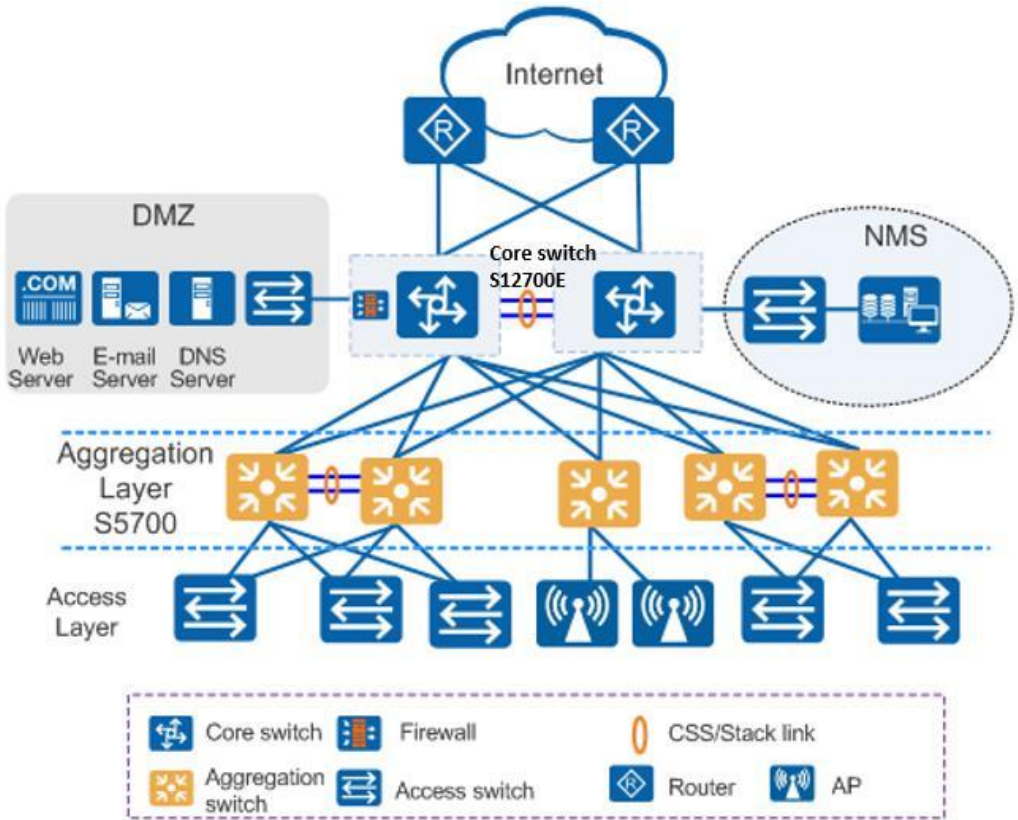
Large-Scale Enterprise Campus Network

CloudEngine S5731-S series switches can be deployed at the access layer of a campus network to build a high-performance and highly reliable enterprise network.



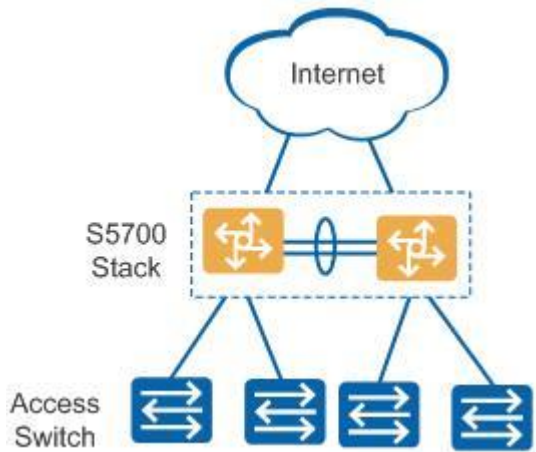
Small- or Medium-scale Enterprise Campus Network

CloudEngine S5731-S series switches can be deployed at the aggregation layer of a campus network to build a high-performance, multi-service, and highly reliable enterprise network.



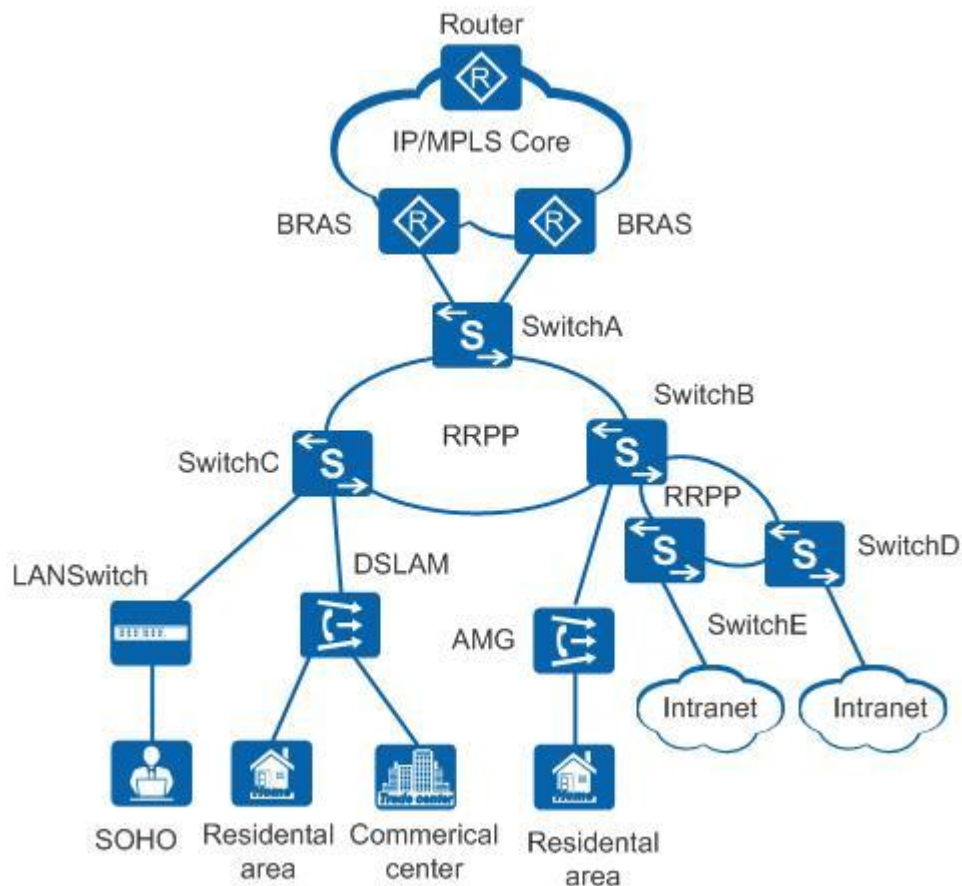
Small-scale Enterprise Campus Network

With powerful aggregation and routing capabilities of CloudEngine S5731-S series switches make them suitable for use as core switches in a small-scale enterprise network. Two or more S5731-S switches use iStack technology to ensure high reliability. They provide a variety of access control policies to achieve centralized management and simplify configuration.



Application on a MAN

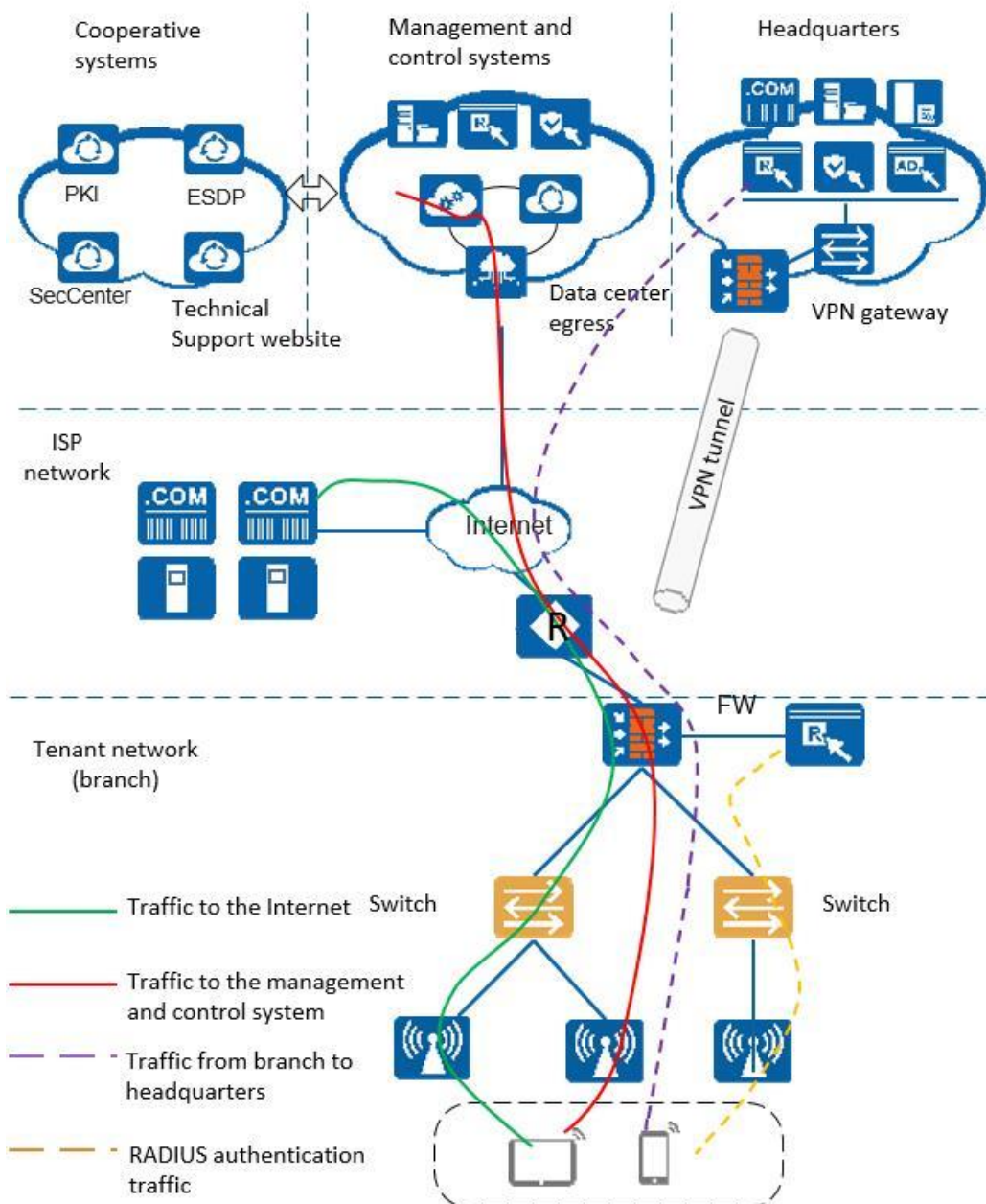
CloudEngine S5731-S series switches can be deployed at the access layer of a MAN (Metropolitan Area Network) to build a high-performance, multi-service, and highly reliable ISP MAN network.



Application in Public Cloud

CloudCampus Solution is a network solution suite based on Huawei public cloud. CloudEngine S5731-S series switches can be located at the access layer.

The switches are plug-and-play. They go online automatically after being powered on and connected with network cables, without the need for complex configurations. The switches can connect to the management and control system (CloudCampus@AC-Campus for switches running V200R019C00 and earlier versions; iMaster NCE-Campus for switches running V200R019C10 and later versions), and use bidirectional certificate authentication to ensure management channel security. The switches provide the NETCONF and YANG interfaces, through which the management and control system delivers configurations to them. In addition, remote maintenance and fault diagnosis can be performed on the management and control system.



Safety and Regulatory Compliance

The following table lists the safety and regulatory compliance of the CloudEngine S5731-S.

Safety and regulatory compliance of the CloudEngine S5731-S series

Certification Category	Description
Safety	<ul style="list-style-type: none"> • IEC 60950-1 • EN 60950-1/A11/A12 • UL 60950-1 • CSA C22.2 No 60950-1 • AS/NZS 60950.1 • CNS 14336-1 • IEC60825-1 • IEC60825-2

Certification Category	Description
	<ul style="list-style-type: none"> • EN60825-1 • EN60825-2
Electromagnetic Compatibility (EMC)	<ul style="list-style-type: none"> • CISPR22 Class A • CISPR24 • EN55022 Class A • EN55024 • ETSI EN 300 386 Class A • CFR 47 FCC Part 15 Class A • ICES 003 Class A • AS/NZS CISPR22 Class A • VCCI Class A • IEC61000-4-2 • ITU-T K 20 • ITU-T K 21 • ITU-T K 44 • CNS13438
Environment	<ul style="list-style-type: none"> • RoHS • REACH • WEEE

NOTE

- EMC: electromagnetic compatibility
- CISPR: International Special Committee on Radio Interference
- EN: European Standard
- ETSI: European Telecommunications Standards Institute
- CFR: Code of Federal Regulations
- FCC: Federal Communication Commission
- IEC: International Electrotechnical Commission
- AS/NZS: Australian/New Zealand Standard
- VCCI: Voluntary Control Council for Interference
- UL: Underwriters Laboratories
- CSA: Canadian Standards Association
- IEEE: Institute of Electrical and Electronics Engineers
- RoHS: restriction of the use of certain hazardous substances
- REACH: Registration Evaluation Authorization and Restriction of Chemicals
- WEEE: Waste Electrical and Electronic Equipment

MIB and Standards Compliance

Supported MIBs

The following table lists the MIBs supported by the CloudEngine S5731-S.

MIBs supported by the CloudEngine S5731-S series

Category	MIB
Public MIB	<ul style="list-style-type: none"> • BRIDGE-MIB

Category	MIB
	<ul style="list-style-type: none"> • DISMAN-NSLOOKUP-MIB • DISMAN-PING-MIB • DISMAN-TRACEROUTE-MIB • ENTITY-MIB • EtherLike-MIB • IF-MIB • IP-FORWARD-MIB • IPv6-MIB • LAG-MIB • LLDP-EXT-DOT1-MIB • LLDP-EXT-DOT3-MIB • LLDP-MIB • NOTIFICATION-LOG-MIB • NQA-MIB • OSPF-TRAP-MIB • P-BRIDGE-MIB • Q-BRIDGE-MIB • RFC1213-MIB • RIPv2-MIB • RMON2-MIB • RMON-MIB • SAVI-MIB • SNMP-FRAMEWORK-MIB • SNMP-MPD-MIB • SNMP-NOTIFICATION-MIB • SNMP-TARGET-MIB • SNMP-USER-BASED-SM-MIB • SNMPv2-MIB • TCP-MIB • UDP-MIB
Huawei-proprietary MIB	<ul style="list-style-type: none"> • HUAWEI-AAA-MIB • HUAWEI-ACL-MIB • HUAWEI-ALARM-MIB • HUAWEI-ALARM-RELIABILITY-MIB • HUAWEI-BASE-TRAP-MIB • HUAWEI-BRAS-RADIUS-MIB • HUAWEI-BRAS-SRVCFG-EAP-MIB • HUAWEI-BRAS-SRVCFG-STATICUSER-MIB • HUAWEI-CBQOS-MIB • HUAWEI-CDP-COMPLIANCE-MIB • HUAWEI-CONFIG-MAN-MIB • HUAWEI-CPU-MIB • HUAWEI-DAD-TRAP-MIB • HUAWEI-DC-MIB

Category	MIB
	<ul style="list-style-type: none"> • HUAWEI-DATASYNC-MIB • HUAWEI-DEVICE-MIB • HUAWEI-DHCPR-MIB • HUAWEI-DHCPS-MIB • HUAWEI-DHCP-SNOOPING-MIB • HUAWEI-DIE-MIB • HUAWEI-DNS-MIB • HUAWEI-DLDP-MIB • HUAWEI-ELMI-MIB • HUAWEI-ERPS-MIB • HUAWEI-ERRORDOWN-MIB • HUAWEI-ENERGYMNGT-MIB • HUAWEI-EASY-OPERATION-MIB • HUAWEI-ENTITY-EXTENT-MIB • HUAWEI-ENTITY-TRAP-MIB • HUAWEI-ETHARP-MIB • HUAWEI-ETHOAM-MIB • HUAWEI-FLASH-MAN-MIB • HUAWEI-FWD-RES-TRAP-MIB • HUAWEI-GARP-APP-MIB • HUAWEI-GTSM-MIB • HUAWEI-HGMP-MIB • HUAWEI-HWTACACS-MIB • HUAWEI-IF-EXT-MIB • HUAWEI-INFOCENTER-MIB • HUAWEI-IPPOOL-MIB • HUAWEI-IPV6-MIB • HUAWEI-ISOLATE-MIB • HUAWEI-L2IF-MIB • HUAWEI-L2MAM-MIB • HUAWEI-L2VLAN-MIB • HUAWEI_LDT-MIB • HUAWEI-LLDP-MIB • HUAWEI-MAC-AUTHEN-MIB • HUAWEI-MEMORY-MIB • HUAWEI-MFF-MIB • HUAWEI-MFLP-MIB • HUAWEI-MSTP-MIB • HUAWEI-BGP-VPN-MIB • HUAWEI-CCC-MIB • HUAWEI-MULTICAST-MIB • HUAWEI-NAP-MIB • HUAWEI-NTPV3-MIB • HUAWEI-PERFORMANCE-MIB • HUAWEI-PORT-MIB

Category	MIB
	<ul style="list-style-type: none"> • HUAWEI-PORTAL-MIB • HUAWEI-QINQ-MIB • HUAWEI-RIPv2-EXT-MIB • HUAWEI-RM-EXT-MIB • HUAWEI-RRPP-MIB • HUAWEI-SECURITY-MIB • HUAWEI-SEP-MIB • HUAWEI-SNMP-EXT-MIB • HUAWEI-SSH-MIB • HUAWEI-STACK-MIB • HUAWEI-SWITCH-L2MAM-EXT-MIB • HUAWEI-SWITCH-SRV-TRAP-MIB • HUAWEI-SYS-MAN-MIB • HUAWEI-TCP-MIB • HUAWEI-TFTPC-MIB • HUAWEI-TRNG-MIB • HUAWEI-XQOS-MIB

Standard Compliance

The following table lists the standards that the CloudEngine S5731-S complies with.

[Standard compliance list of the CloudEngine S5731-S series](#)

Standard Organization	Standard or Protocol
IETF	<ul style="list-style-type: none"> • RFC 768 User Datagram Protocol (UDP) • RFC 792 Internet Control Message Protocol (ICMP) • RFC 793 Transmission Control Protocol (TCP) • RFC 826 Ethernet Address Resolution Protocol (ARP) • RFC 854 Telnet Protocol Specification • RFC 951 Bootstrap Protocol (BOOTP) • RFC 959 File Transfer Protocol (FTP) • RFC 1058 Routing Information Protocol (RIP) • RFC 1112 Host extensions for IP multicasting • RFC 1157 A Simple Network Management Protocol (SNMP) • RFC 1256 ICMP Router Discovery • RFC 1305 Network Time Protocol Version 3 (NTP) • RFC 1349 Internet Protocol (IP) • RFC 1493 Definitions of Managed Objects for Bridges • RFC 1542 Clarifications and Extensions for the Bootstrap Protocol • RFC 1643 Ethernet Interface MIB • RFC 1757 Remote Network Monitoring (RMON) • RFC 1901 Introduction to Community-based SNMPv2 • RFC 1902-1907 SNMP v2 • RFC 1981 Path MTU Discovery for IP version 6 • RFC 2131 Dynamic Host Configuration Protocol (DHCP)

Standard Organization	Standard or Protocol
	<ul style="list-style-type: none"> • RFC 2328 OSPF Version 2 • RFC 2453 RIP Version 2 • RFC 2460 Internet Protocol, Version 6 Specification (IPv6) • RFC 2461 Neighbor Discovery for IP Version 6 (IPv6) • RFC 2462 IPv6 Stateless Address Auto configuration • RFC 2463 Internet Control Message Protocol for IPv6 (ICMPv6) • RFC 2474 Differentiated Services Field (DS Field) • RFC 2740 OSPF for IPv6 (OSPFv3) • RFC 2863 The Interfaces Group MIB • RFC 2597 Assured Forwarding PHB Group • RFC 2598 An Expedited Forwarding PHB • RFC 2571 SNMP Management Frameworks • RFC 2865 Remote Authentication Dial In User Service (RADIUS) • RFC 3046 DHCP Option82 • RFC 3376 Internet Group Management Protocol, Version 3 (IGMPv3) • RFC 3513 IP Version 6 Addressing Architecture • RFC 3579 RADIUS Support For EAP • RFC 4271 A Border Gateway Protocol 4 (BGP-4) • RFC 4760 Multiprotocol Extensions for BGP-4 • draft-grant-tacacs-02 TACACS+ • RFC 6241 Network Configuration Protocol (NETCONF) • RFC 6020 YANG - A Data Modeling Language for the Network Configuration Protocol (NETCONF)
IEEE	<ul style="list-style-type: none"> • IEEE 802.1D Media Access Control (MAC) Bridges • IEEE 802.1p Traffic Class Expediting and Dynamic Multicast Filtering • IEEE 802.1Q Virtual Bridged Local Area Networks • IEEE 802.1ad Provider Bridges • IEEE 802.2 Logical Link Control • IEEE Std 802.3 CSMA/CD • IEEE Std 802.3ab 1000BASE-T specification • IEEE Std 802.3ad Aggregation of Multiple Link Segments • IEEE Std 802.3ae 10GE WEN/LAN Standard • IEEE Std 802.3x Full Duplex and flow control • IEEE Std 802.3z Gigabit Ethernet Standard • IEEE802.1ax/IEEE802.3ad Link Aggregation • IEEE 802.3ah Ethernet in the First Mile. • IEEE 802.1ag Connectivity Fault Management • IEEE 802.1ab Link Layer Discovery Protocol • IEEE 802.1D Spanning Tree Protocol • IEEE 802.1w Rapid Spanning Tree Protocol • IEEE 802.1s Multiple Spanning Tree Protocol • IEEE 802.1x Port based network access control protocol • IEEE 802.3af DTE Power via MIDI • IEEE 802.3at DTE Power via the MDI Enhancements

Standard Organization	Standard or Protocol
	<ul style="list-style-type: none"> IEEE 802.3az Energy Efficient Ethernet
ITU	<ul style="list-style-type: none"> ITU SG13 Y.17ethoam ITU SG13 QoS control Ethernet-Based IP Access ITU-T Y.1731 ETH OAM performance monit
ISO	<ul style="list-style-type: none"> ISO 10589 IS-IS Routing Protocol
MEF	<ul style="list-style-type: none"> MEF 2 Requirements and Framework for Ethernet Service Protection MEF 9 Abstract Test Suite for Ethernet Services at the UNI MEF 10.2 Ethernet Services Attributes Phase 2 MEF 11 UNI Requirements and Framework MEF 13 UNI Type 1 Implementation Agreement MEF 15 Requirements for Management of Metro Ethernet Phase 1 Network Elements MEF 17 Service OAM Framework and Requirements MEF 20 UNI Type 2 Implementation Agreement MEF 23 Class of Service Phase 1 Implementation Agreement Xmodem XMODEM/YMODEM Protocol Reference

Ordering Information

The following table lists ordering information of the CloudEngine S5731-S series switches.

Model	Product Description
CloudEngine S5731-S24T4X	CloudEngine S5731-S24T4X (24 x 10/100/1000BASE-T ports, 4 x 10GE SFP+ ports, without power module)
CloudEngine S5731-S24P4X	CloudEngine S5731-S24P4X (24 x 10/100/1000BASE-T ports, 4 x 10GE SFP+ ports, PoE+, without power module)
CloudEngine S5731-S32ST4X	CloudEngine S5731-S32ST4X(8*10/100/1000BASE-T ports, 24*GE SFP ports, 4*10GE SFP+ ports, without power module)
CloudEngine S5731-S32ST4X-A	CloudEngine S5731-S32ST4X-A(8*10/100/1000BASE-T ports, 24*GE SFP ports, 4*10GE SFP+ ports, AC power, front access)
CloudEngine S5731-S32ST4X-D	CloudEngine S5731-S32ST4X-D(8*10/100/1000BASE-T ports, 24*GE SFP ports, 4*10GE SFP+ ports, DC power, front access)
CloudEngine S5731-S48T4X	CloudEngine S5731-S48T4X (48 x 10/100/1000BASE-T ports, 4 x 10GE SFP+ ports, without power module)
CloudEngine S5731-S48P4X	CloudEngine S5731-S48P4X (48 x 10/100/1000BASE-T ports, 4 x 10GE SFP+ ports, PoE+, without power module)
CloudEngine S5731-S48S4X	CloudEngine S5731-S48S4X(48*GE SFP ports, 4*10GE SFP+ ports, without power module)
CloudEngine S5731-S48S4X-A	CloudEngine S5731-S48S4X-A(48*GE SFP ports, 4*10GE SFP+ ports, AC power, front access)
PAC150S12-R	150 W AC power module
PAC600S12-EB	600 W AC power module
PAC600S12-DB	600 W AC power module

Model	Product Description
PAC600S12-CB	600 W AC power module
PDC180S12-CR	180 W DC power module
PDC1000S12-DB	1000 W DC power module
PAC1000S56-DB	1000 W AC PoE power module
PDC1000S56-CB	1000 W DC PoE power module
FAN-023A-B	Fan module
L-VxLAN-S57	S57 Series, VxLAN License, Per Device
N1-S57S-M-Lic	S57XX-S Series Basic SW,Per Device
N1-S57S-M-SnS1Y	S57XX-S Series Basic SW,SnS,Per Device,1Year
N1-S57S-F-Lic	N1-CloudCampus,Foundation,S57XX-S Series,Per Device
N1-S57S-F-SnS1Y	N1-CloudCampus,Foundation,S57XX-S Series,SnS,Per Device,1Year
N1-S57S-A-Lic	N1-CloudCampus,Advanced,S57XX-S Series,Per Device
N1-S57S-A-SnS1Y	N1-CloudCampus,Advanced,S57XX-S Series,SnS,Per Device,1Year
N1-S57S-FToA-Lic	N1-Upgrade-Foundation to Advanced,S57XX-S,Per Device
N1-S57S-FToA-SnS1Y	N1-Upgrade-Foundation to Advanced,S57XX-S,SnS,Per Device,1Year

More Information


For more information about Huawei Campus Switches, visit <http://e.huawei.com> or contact us in the following ways:

- Global service hotline: <http://e.huawei.com/en/service-hotline>
- Logging in to the Huawei Enterprise technical support website: <http://support.huawei.com/enterprise/>
- Sending an email to the customer service mailbox: support_e@huawei.com

Copyright © Huawei Technologies Co., Ltd. 2021. All rights reserved.

No part of this document may be reproduced or transmitted in any form or by any means without prior written consent of Huawei Technologies Co., Ltd.

Trademarks and Permissions

 HUAWEI and other Huawei trademarks are trademarks of Huawei Technologies Co., Ltd.

All other trademarks and trade names mentioned in this document are the property of their respective holders.

Notice

The purchased products, services and features are stipulated by the contract made between Huawei and the customer. All or part of the products, services and features described in this document may not be within the purchase scope or the usage scope. Unless otherwise specified in the contract, all statements, information, and recommendations in this document are provided "AS IS" without warranties, guarantees or representations of any kind, either express or implied.

The information in this document is subject to change without notice. Every effort has been made in the preparation of this document to ensure accuracy of the contents, but all statements, information, and recommendations in this document do not constitute a warranty of any kind, express or implied.

Huawei Technologies Co., Ltd.

Address: Huawei Industrial Base Bantian,
Longgang Shenzhen 518129 People's
Republic of China

Website: e.huawei.com